



# KELLERGECHOSS

FLUCHT- UND RETTUNGSWEGE



BRANDSCHUTZKLAPPE



FLUCHTWEG RICHTUNG



STANDORT FEUERLÖSCHER



FLUR (FLUCHTWEG)



BRANDMELDEKNOPF




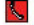




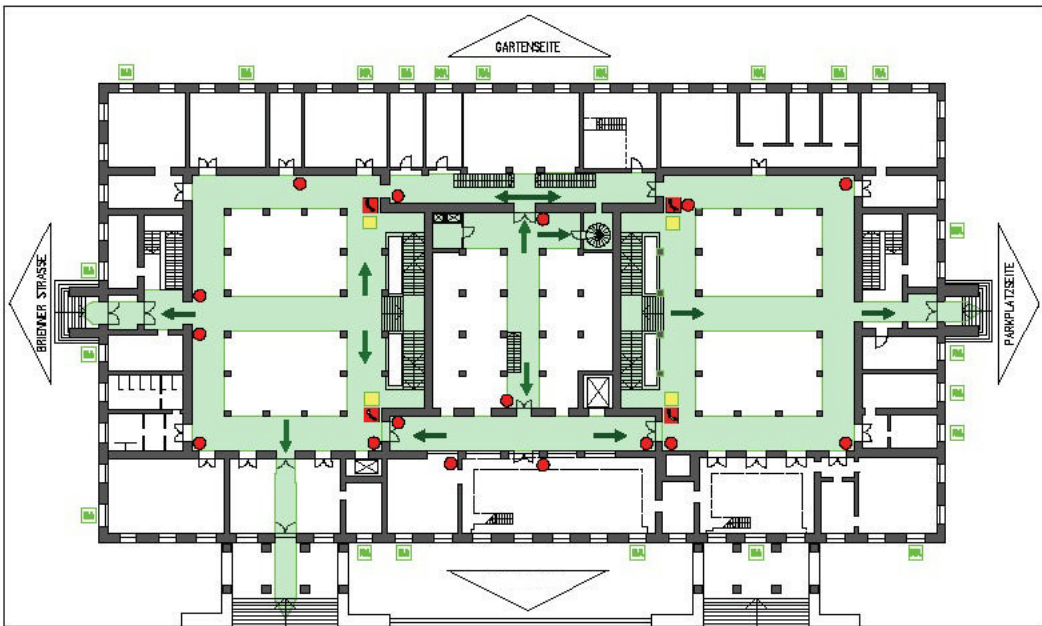
NOTAUSSTIEG



# UNTERGESCHOSS







FLUCHT- UND RETTUNGSWEGE

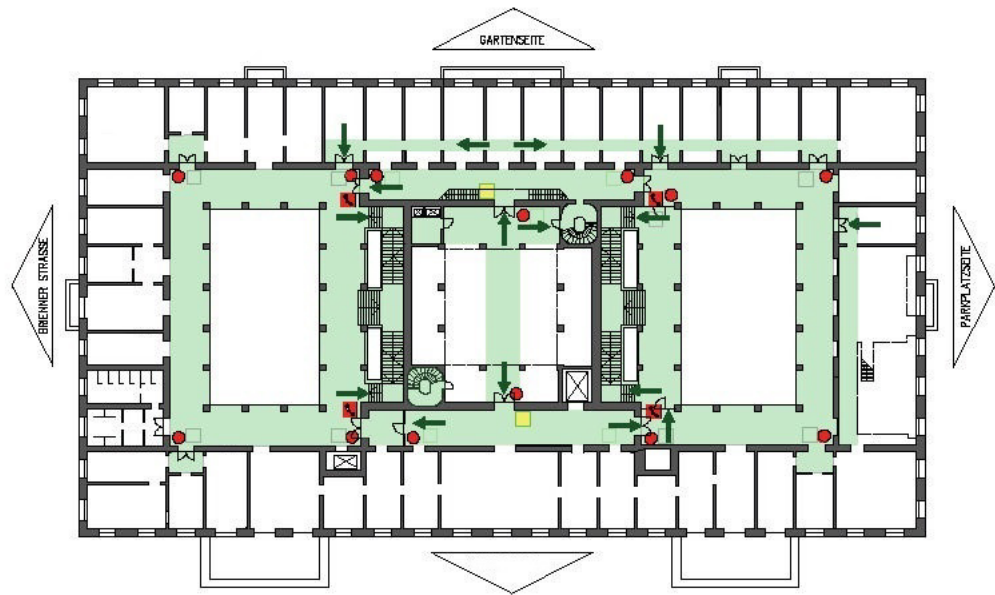
- |   |                       |   |                  |
|---|-----------------------|---|------------------|
|  | BRANDSCHUTZKLAPPE     |  | FLUR (FLUCHTWEG) |
|  | FLUCHTWEG RICHTUNG    |  | BRANDMELDEKNOPF  |
|  | STANDORT FEUERLOSCHER |  | NOTAUSSTIEG      |



# ERDGESCHOSS







FLUCHT- UND RETTUNGSWEGE

- |   |                       |   |                  |
|---|-----------------------|---|------------------|
|  | BRANDSCHUTZKLAPPE     |  | FLUR (FLUCHTWEG) |
|  | FLUCHTWEG RICHTUNG    |  | BRANDMELDEKNOPF  |
|  | STANDORT FEUERLÖSCHER |  | NOTAUSSTIEG      |



# 1. OBERGESCHOSS

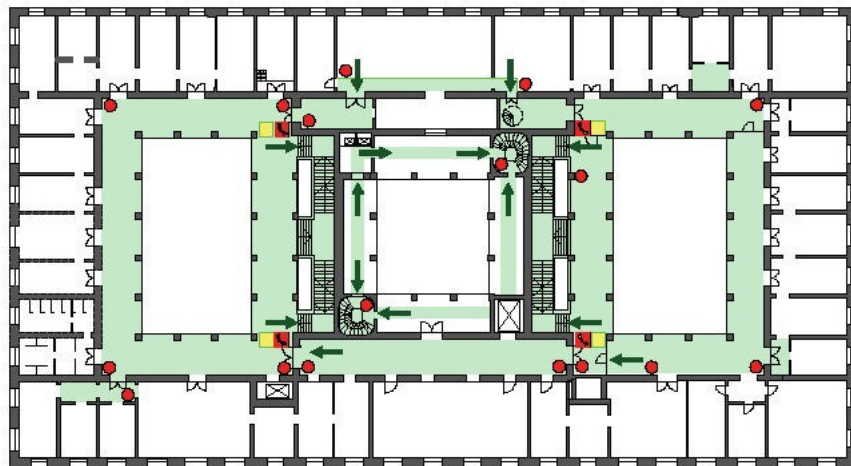
FLUCHT- UND RETTUNGSWEGE

- |   |                       |   |                  |
|---|-----------------------|---|------------------|
|  | BRANDSCHUTZKLAPPE     |  | FLUR (FLUCHTWEG) |
|  | FLUCHTWEG RICHTUNG    |  | BRANDMELDEKNOPF  |
|  | STANDORT FEUERLÖSCHER |  | NOTAUSSTIEG      |

GARTENSEITE

BRENNER STRASSE

PARKPLATZSEITE



## 2. OBERGESCHOSS

FLUCHT- UND RETTUNGSWEGE



BRANDSCHUTZKLAPPE



FLUCHTWEG RICHTUNG



STANDORT FEUERLÖSCHER



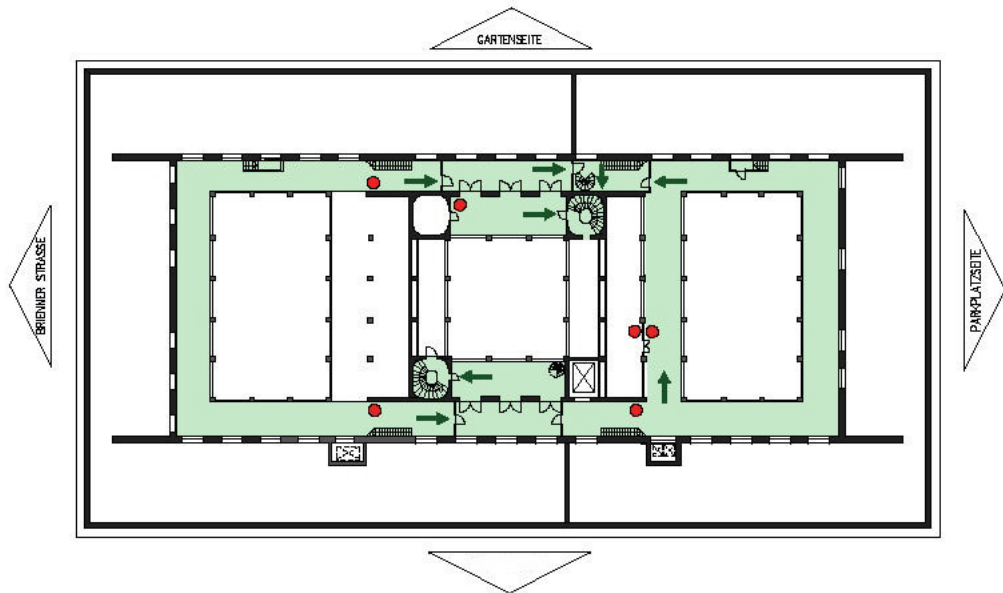
FLUR (FLUCHTWEG)



BRANDMELDEKNOPF









NOTAUSSTIEG



# DACHGESCHOSS

FLUCHT- UND RETTUNGSWEGE

- |   |                       |   |                  |
|---|-----------------------|---|------------------|
|  | BRANDSCHUTZKLAPPE     |  | FLUR (FLUCHTWEG) |
|  | FLUCHTWEG RICHTUNG    |  | BRANDMELDEKNOPF  |
|  | STANDORT FEUERLÖSCHER |  | NOTAUSSTIEG      |